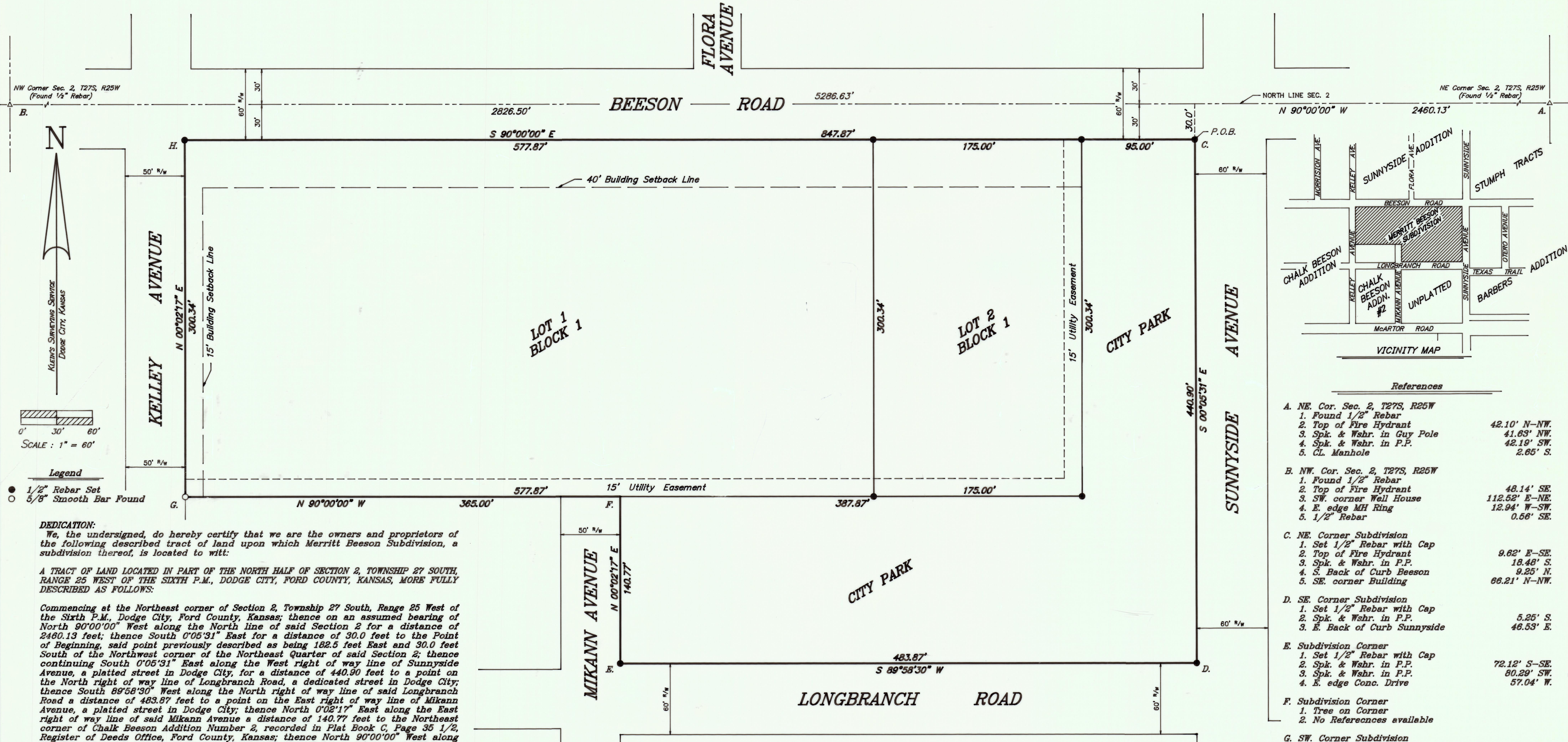


PLAT OF MERRITT BEESON SUBDIVISION

A SUBDIVISION OF PART OF THE
NORTH HALF OF SECTION 2, TOWNSHIP 27 SOUTH, RANGE 25 WEST
DODGE CITY, FORD COUNTY, KANSAS



- References**
- A. NE. Cor. Sec. 2, T27S, R25W
 - 1. Found 1/2" Rebar
 - 2. Top of Fire Hydrant
 - 3. Spk. & Wshr. in Guy Pole
 - 4. Spk. & Wshr. in P.P.
 - 5. CL. Manhole
 - B. NW. Cor. Sec. 2, T27S, R25W
 - 1. Found 1/2" Rebar
 - 2. Top of Fire Hydrant
 - 3. SW. corner Well House
 - 4. E. edge MH Ring
 - 5. 1/2" Rebar
 - C. NE. Corner Subdivision
 - 1. Set 1/2" Rebar with Cap
 - 2. Top of Fire Hydrant
 - 3. Spk. & Wshr. in P.P.
 - 4. S. Back of Curb Beeson
 - 5. SE. corner Building
 - D. SE. Corner Subdivision
 - 1. Set 1/2" Rebar with Cap
 - 2. Spk. & Wshr. in P.P.
 - 3. E. Back of Curb Sunnyside
 - E. Subdivision Corner
 - 1. Set 1/2" Rebar with Cap
 - 2. Spk. & Wshr. in P.P.
 - 3. Spk. & Wshr. in P.P.
 - 4. E. edge Conc. Drive
 - F. Subdivision Corner
 - 1. Tree on Corner
 - 2. No References available
 - G. SW. Corner Subdivision
 - 1. Found 5/8" Smooth Bar (1' Deep)
 - 2. E. Back of Curb Kelley
 - 3. N. edge Conc. Drive
 - 4. NW. corner House Foundation
 - 5. CL. Chain Link Fo. corner Post
 - H. NW. Corner Subdivision
 - 1. Set 1/2" Rebar with Cap
 - 2. Top of Fire Hydrant
 - 3. Spk. & Wshr. in P.P.
 - 4. Spk. & Wshr. in P.P.
 - 5. NW. corner Building

DEDICATION:
We, the undersigned, do hereby certify that we are the owners and proprietors of the following described tract of land upon which Merritt Beeson Subdivision, a subdivision thereof, is located to witt:

A TRACT OF LAND LOCATED IN PART OF THE NORTH HALF OF SECTION 2, TOWNSHIP 27 SOUTH, RANGE 25 WEST OF THE SIXTH P.M., DODGE CITY, FORD COUNTY, KANSAS, MORE FULLY DESCRIBED AS FOLLOWS:

Commencing at the Northeast corner of Section 2, Township 27 South, Range 25 West of the Sixth P.M., Dodge City, Ford County, Kansas; thence on an assumed bearing of North 90°00'00" West along the North line of said Section 2 for a distance of 2460.13 feet; thence South 0°05'31" East for a distance of 30.0 feet to the Point of Beginning, said point previously described as being 182.5 feet East and 30.0 feet South of the Northwest corner of the Northeast Quarter of said Section 2; thence continuing South 0°05'31" East along the West right of way line of Sunnyside Avenue, a platted street in Dodge City, for a distance of 440.90 feet to a point on the North right of way line of Longbranch Road, a dedicated street in Dodge City; thence South 89°58'30" West along the North right of way line of said Longbranch Road a distance of 483.87 feet to a point on the East right of way line of Mikann Avenue, a platted street in Dodge City; thence North 0°02'17" East along the East right of way line of said Mikann Avenue a distance of 140.77 feet to the Northeast corner of Chalk Beeson Addition Number 2, recorded in Plat Book C, Page 35 1/2, Register of Deeds Office, Ford County, Kansas; thence North 90°00'00" West along the North line of said Chalk Beeson Addition Number 2 for a distance of 365.0 feet to the Northwest corner of said Chalk Beeson Addition Number 2; thence North 0°02'17" East along the East right of way line of Kelley Avenue, a platted street in Dodge City, for a distance of 300.34 feet to a point on the South right of way line of Beeson Road, a platted street in Dodge City; thence South 90°00'00" East along the South right of way line of said Beeson Road a distance of 847.87 feet to the Point of Beginning, containing 7.41 acres, more or less.

We further certify that all streets, avenues, alleys and easements included in this subdivision are fully set forth and defined in the accompanying plat and are intended to be and are hereby dedicated and re-dedicated to the public for public use, including that part designated as City Park hereon.

Evangelical Lutheran Good Samaritan Society
Mark Jerstad - President

State of South Dakota
County of Minnehaha

Be it remembered that on this 8th day of September, 1992, before me, a notary in and for said County and State, came Mark Jerstad, President of the Evangelical Lutheran Good Samaritan Society, to me personally known to be the same person who executed the foregoing instrument of writing, and duly acknowledged the execution of the same, in testimony whereof, I have hereunto set my hand and affixed my notarial seal the same day and year above written.

My Commission Expires January 22, 1999
Notary Public

This plat of Merritt Beeson Subdivision has been submitted and approved by Ford County Regional Planning Commission this 14th day of September, 1992.
Secretary: Barbara S. Reaves
Chairman: Charles Landers

The dedication shown on on this Plat accepted by the Board of Commissioners of Ford County, Ford County, Kansas, this 19th day of Oct., 1992
Chairman: Laura Carlson
Commissioner: Ken Hurley
Commissioner: Kent Steffik
County Clerk: Rita A. Slattery

The dedication shown on this Plat accepted by the Board of City Commissioners of the City of Dodge City, Kansas, this 21st day of Sept., 1992.
Mayor: Tom Martin
City Clerk: Nannette Lampe

Reviewed and approved by County Engineer Ford County, Kansas, this 19th day of October, 1992.
County Engineer: Christopher M. Carrier P.E.

State of Kansas ss
County of Ford

This is to certify that this instrument was filed for record in the Register of Deeds Office on this 27 day of Oct., 1992, in Book D, Page 200 at 1:10 P.M.
Register of Deeds: Juanita Gulick
County Clerk: Rita A. Slattery

Entered on transfer record this 27 day of Oct., 1992.

Closure Computations

BEARING	DISTANCE	SIN	COS	NORTH	SOUTH	EAST	WEST
S 00°05'31" E	440.90	0.0016	1.0000		440.90	0.71	
S 89°58'30" W	483.87	1.0000	0.0004		0.21		483.87
N 00°02'17" E	140.77	0.0007	1.0000	140.77		0.09	
N 90°00'00" W	365.00	1.0000	0.0000		0.00		365.00
N 00°02'17" E	300.34	0.0007	1.0000	300.34		0.20	
S 90°00'00" E	847.87	1.0000	0.0000		0.00	847.87	
TOTALS				441.11	441.11	848.87	848.87

Kevin Wayne Noll
Registered Land Surveyor
KANSAS
Klein's Surveying Service
Dodge City, Kansas