

DEDICATION:
 WE THE UNDERSIGNED DO HEREBY CERTIFY THAT WE ARE THE OWNERS AND PROPRIETORS OF THE FOLLOWING DESCRIBED TRACT OF LAND UPON WHICH ST. ANTHONY ADDITION, A SUBDIVISION THEREOF, IS LOCATED TO WIT: BEGINNING AT A POINT ON THE NORTH BOUNDARY LINE OF COMANCHE STREET, A PLATTED STREET IN DODGE CITY, KANSAS, SAID POINT BEING 25 FEET WEST AND 60 FEET NORTH OF THE SOUTHEAST CORNER OF THE SOUTHEAST QUARTER OF SECTION 23, T.26S., R.25W., FORD COUNTY, KANSAS; THENCE NORTH 00°13' WEST PARALLEL WITH AND 25 FEET FROM THE EAST BOUNDARY LINE OF THE SOUTHEAST QUARTER OF SAID SECTION 23 FOR 1360.4 FEET TO A POINT ON THE SOUTH BOUNDARY LINE OF LA MESA DRIVE, A PLATTED STREET IN DODGE CITY, KANSAS; THENCE SOUTH 89°50' WEST ALONG THE SOUTH BOUNDARY LINE OF SAID LA MESA DRIVE FOR 384.55 FEET TO A POINT ON THE EAST BOUNDARY LINE OF CENTRAL AVENUE, AS ESTABLISHED BY INFORMATION OF PUBLIC RECORD; THENCE SOUTH 00°35' WEST ALONG THE EAST BOUNDARY LINE OF SAID CENTRAL AVENUE FOR 1353.95 FEET TO A POINT ON THE NORTH BOUNDARY LINE OF SAID COMANCHE STREET; THENCE SOUTH 89°14' EAST ALONG THE NORTH BOUNDARY LINE OF SAID COMANCHE STREET FOR 403.50 FEET TO THE POINT OF BEGINNING.

WE FURTHER CERTIFY THAT ALL STREETS, ALLEYS, EASEMENTS AND AVENUES INCLUDED IN THIS SUBDIVISION ARE FULLY SET FORTH AND DEFINED IN THE ACCOMPANYING PLAT AND ARE INTENDED TO BE AND ARE HEREBY DEDICATED AND OR REDEDICATED TO AND FOR PUBLIC USE AND PURPOSE AS HIGHWAYS.

ST. ANTHONY ADDITION

DODGE CITY, KANSAS

PART OF THE SOUTHEAST QUARTER OF SECTION 23, TOWNSHIP 26 SOUTH, RANGE 25 WEST
 FORD COUNTY, KANSAS

I, GRANT A. BREZINA, LICENSED PROFESSIONAL ENGINEER AND REGISTERED LAND SURVEYOR IN THE STATE OF KANSAS HEREBY CERTIFY THAT I HAVE ACCURATELY SURVEYED AND PLATTED ST ANTHONY ADDITION, AND THAT BOUNDARY CORNERS AND CONTROL POINTS HAVE BEEN SET AS REQUIRED BY ORDINANCE.

DATE December 12, 1973
 GRANT A. BREZINA
 BREZINA ENGINEERING
 DODGE CITY, KANSAS

THIS PLAT OF ST. ANTHONY ADDITION HAS BEEN SUBMITTED TO AND APPROVED BY THE FORD COUNTY REGIONAL PLANNING COMMISSION THIS 14th DAY OF JANUARY, 1974

SECRETARY _____ CHAIRMAN _____
 THE DEDICATIONS SHOWN ON THIS PLAT ACCEPTED BY THE BOARD OF CITY COMMISSIONERS OF THE CITY OF DODGE CITY, KANSAS, THIS 23 DAY OF JANUARY, 1974
 ATTEST: N.A. Cromwell Bill Traylor
 CITY CLERK MAYOR

THE DEDICATIONS SHOWN ON THIS PLAT ACCEPTED BY THE BOARD OF COUNTY COMMISSIONERS OF FORD COUNTY, KANSAS, THIS 21 DAY OF JANUARY, 1974
 ATTEST: Vern Birney Fred Stewart
 CHAIRMAN COMMISSIONER
Lucille Keck George R. Theis
 COUNTY CLERK COMMISSIONER

ENTERED ON TRANSFER RECORDS THIS 28 DAY OF JANUARY, 1974

THIS IS TO CERTIFY THAT THIS INSTRUMENT WAS FILED FOR RECORD IN THE REGISTER OF DEEDS OFFICE ON THE 28 DAY OF JANUARY, 1974, IN BOOK 8, PAGE 11-12.

Filing Time 1:10 P.M.
 Filing Fee \$10.00
Janita Sulick
 REGISTER OF DEEDS

DODGE CITY MEDICAL CENTER BUILDING, INC.
 R. DALE BOLES, PRESIDENT C. K. ZACHARIAS, VICE-PRESIDENT
 A. H. BAUM, SECRETARY-TREASURER

STATE OF KANSAS
 COUNTY OF FORD SS

BE IT REMEMBERED THAT ON THIS _____ DAY OF _____, 1973, BEFORE ME, A NOTARY PUBLIC IN AND FOR SAID COUNTY AND STATE CAME R. DALE BOLES, C. K. ZACHARIAS AND A. H. BAUM TO ME PERSONALLY KNOWN TO BE THE SAME PERSONS WHO EXECUTED THE FORGOING INSTRUMENT OF WRITING AND DULY ACKNOWLEDGED THE EXECUTION OF SAME. IN TESTIMONY WHEREOF, I HAVE HEREUNTO SET MY HAND AND AFFIXED MY NOTARIAL SEAL THE DAY AND YEAR ABOVE WRITTEN.

MY COMMISSION EXPIRES _____ NOTARY PUBLIC

SISTERS OF ST. JOSEPH OF WICHITA, KANSAS
 BY: Sister M. Antoinette Yulek Sister Helen Barrett
 PRESIDENT SECRETARY

STATE OF KANSAS
 COUNTY OF SEDGWICK SS
 BE IT REMEMBERED THAT ON THIS 14th DAY OF December, 1973, BEFORE ME, A NOTARY PUBLIC IN AND FOR SAID COUNTY AND STATE, CAME Sister M. Antoinette Yulek AND Sister Helen Barrett TO ME PERSONALLY KNOWN TO BE THE SAME PERSONS WHO EXECUTED THE FORGOING INSTRUMENT OF WRITING AND DULY ACKNOWLEDGED THE EXECUTION OF SAME. IN TESTIMONY WHEREOF, I HAVE HEREUNTO SET MY HAND AND AFFIXED MY NOTARIAL SEAL THE DAY AND YEAR ABOVE WRITTEN.

MY COMMISSION EXPIRES July 17, 1976
Sister Maureen Dougherty
 NOTARY PUBLIC SISTER MAUREEN DOUGHERTY

STOUT, INC.
 BY: L. E. Stout Mary Ann Stout
 L. E. STOUT, PRESIDENT MARY ANN STOUT, SECRETARY

FIRST FEDERAL SAVINGS AND LOAN ASSOCIATION OF DODGE CITY
 BY: Scott C. Adams Orville Brehm
 SCOTT C. ADAMS, PRESIDENT ORVILLE BREHM, SECRETARY

STATE OF KANSAS
 COUNTY OF FORD SS
 BE IT REMEMBERED THAT ON THIS 17th DAY OF December, 1973, BEFORE ME, A NOTARY PUBLIC IN AND FOR SAID COUNTY AND STATE CAME L. E. STOUT, MARY ANN STOUT, SCOTT C. ADAMS AND ORVILLE BREHM TO ME PERSONALLY KNOWN TO BE THE SAME PERSONS WHO EXECUTED THE FORGOING INSTRUMENT OF WRITING AND DULY ACKNOWLEDGED THE EXECUTION OF SAME. IN TESTIMONY WHEREOF, I HAVE HEREUNTO SET MY HAND AND AFFIXED MY NOTARIAL SEAL THE DAY AND YEAR ABOVE WRITTEN.

MY COMMISSION EXPIRES June 15, 1975
Shirley Gingerich
 NOTARY PUBLIC SHIRLEY GINGERICH

WILLIAM J. HOLMAN THELMA D. HOLMAN HERBERT C. WHITE ROWENA G. WHITE
 WILLIAM J. HOLMAN THELMA D. HOLMAN HERBERT C. WHITE ROWENA G. WHITE

THE FORD COUNTY BUILDING AND LOAN ASSOCIATION
 BY: Fredric R. Young D.P. Young
 FREDRIC R. YOUNG, PRESIDENT D. P. YOUNG, TREASURER

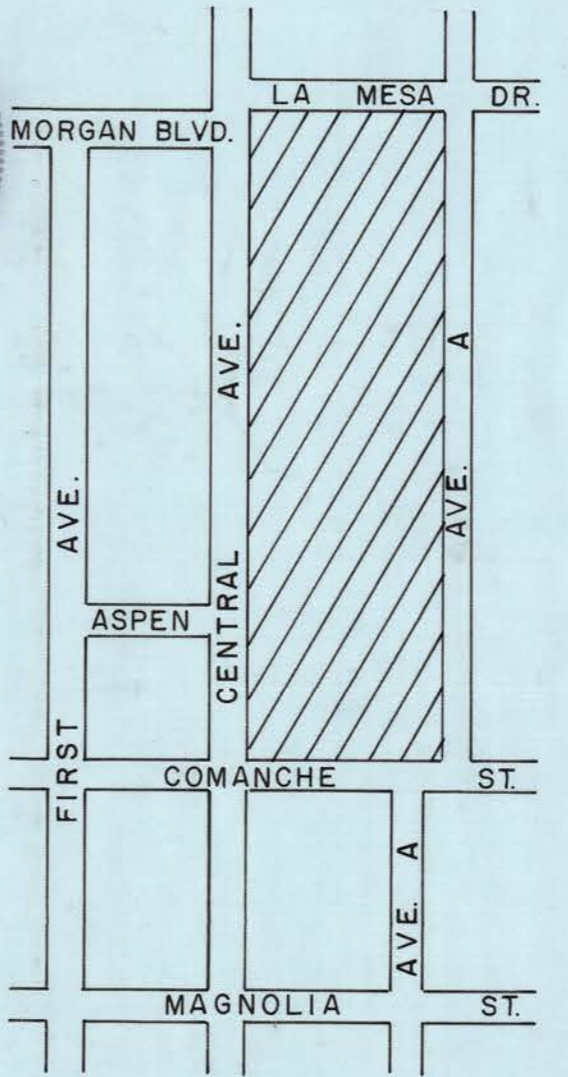
STATE OF KANSAS
 COUNTY OF FORD SS
 BE IT REMEMBERED THAT ON THIS 17th DAY OF December, 1973, BEFORE ME, A NOTARY PUBLIC IN AND FOR SAID COUNTY AND STATE CAME WILLIAM J. HOLMAN AND THELMA D. HOLMAN, HIS WIFE, HERBERT C. WHITE AND ROWENA G. WHITE, HIS WIFE, FREDRIC R. YOUNG AND D. P. YOUNG TO ME PERSONALLY KNOWN TO BE THE SAME PERSONS WHO EXECUTED THE FORGOING INSTRUMENT OF WRITING AND DULY ACKNOWLEDGED THE EXECUTION OF SAME. IN TESTIMONY WHEREOF, I HAVE HEREUNTO SET MY HAND AND AFFIXED MY NOTARIAL SEAL THE DAY AND YEAR ABOVE WRITTEN.

MY COMMISSION EXPIRES February 10, 1974
Virginia B. Page
 NOTARY PUBLIC VIRGINIA B. PAGE

THE CITY OF DODGE CITY
 BY: Bill Traylor
 BILL TRAYLOR, MAYOR
 STATE OF KANSAS
 COUNTY OF FORD SS

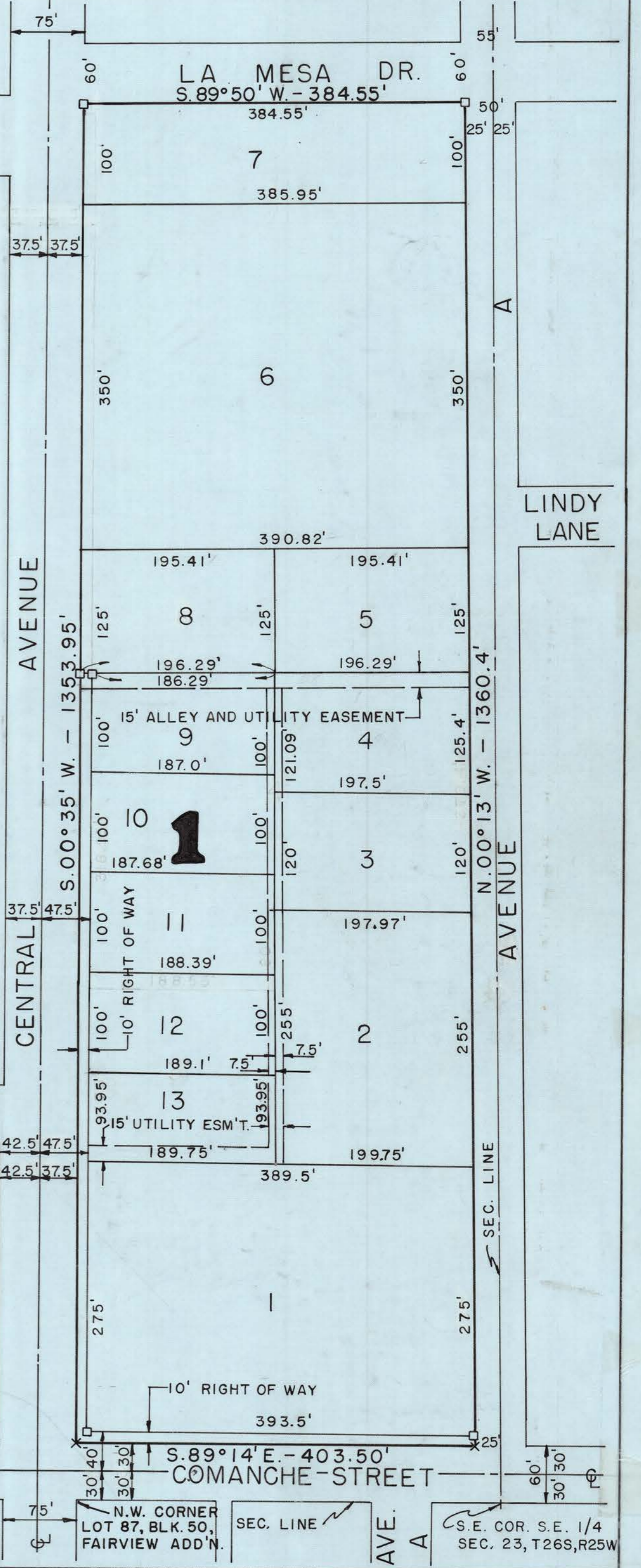
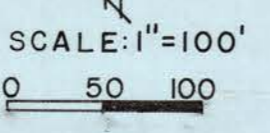
BE IT REMEMBERED THAT ON THIS 14th DAY OF December, 1973, BEFORE ME, A NOTARY PUBLIC IN AND FOR SAID COUNTY AND STATE CAME BILL TRAYLOR AND N.A. CROMWELL TO ME PERSONALLY KNOWN TO BE THE SAME PERSONS WHO EXECUTED THE FORGOING INSTRUMENT OF WRITING AND DULY ACKNOWLEDGED THE EXECUTION OF SAME. IN TESTIMONY WHEREOF, I HAVE HEREUNTO SET MY HAND AND AFFIXED MY NOTARIAL SEAL THE DAY AND YEAR ABOVE WRITTEN.

MY COMMISSION EXPIRES February 12, 1976
Geraldine J. Brown
 NOTARY PUBLIC GERALDINE J. BROWN



LOCATION MAP

□ = 4" X 4" CONC. MONUMENT
 X = X SET IN CONCRETE
 NOTE: IRON PIN SET AT EACH LOT CORNER



ST. ANTHONY ADDITION

DODGE CITY, KANSAS

PART OF THE SOUTHEAST QUARTER OF SECTION 23, TOWNSHIP 26 SOUTH, RANGE 25 WEST
 FORD COUNTY, KANSAS

EXTERIOR BOUNDARY PLAT



STATE OF KANSAS, ss.
 FORD COUNTY
 This instrument was filed in this office
 on the 28 day of Jan, A.D.
 1973 at 1:10 o'clock P.M.
 and duly Recorded in Book 0
 at _____ Page 11-12
 Fees 10.00

Guarinto Sulick
 Register of Deeds

REFERENCE TIES TO CORNERS

1. SOUTHEAST CORNER OF SUBDIVISION
 1. X IN CONCRETE MONUMENT
 2. CENTER LINE BELL TELEPHONE MANHOLE 8.2' E.
 3. TOE OF CURB 13.0' E.
 4. BACK OF CURB 10.0' S.
 5. BASE OF S.E. CORNER RETAINING WALL 11.4' W.

2. NORTHEAST CORNER OF SUBDIVISION
 1. 4"X4" CONCRETE MONUMENT AT CORNER
 2. BACK OF CURB ON RETURN 9.95' N.
 3. BACK OF CURB ON RETURN 5.1' E.
 4. SPIKE AND WASHER IN POWER POLE 64.4' S.
 5. E. FACE FENCE CORNER 99.3' W.

3. NORTHWEST CORNER OF SUBDIVISION
 1. 4"X4" CONCRETE MONUMENT AT CORNER
 2. SPIKE AND WASHER IN POWER POLE 9.25' W.
 3. SPIKE AND WASHER IN POWER POLE 14.55' S.E.
 4. TOP FIRE HYDRANT 51.65' N.
 5. CENTER LINE SEWER MANHOLE 54.5' N.W.
 6. TOE OF CURB 14.0' N.

4. SOUTHWEST CORNER OF SUBDIVISION
 1. X IN CONCRETE
 2. CENTER LINE SEWER MANHOLE 57.4' W.S.W.
 3. TOE OF CURB 12.5' S.
 4. TOE OF CURB 19.5' W.
 5. TOP FIRE HYDRANT 88.5' S.W.
 6. CORNER OF RETAINING WALL 0.9' E. & 0.45' N.

REVIEWED AND APPROVED BY
 COUNTY ENGINEER FORD COUNTY, KANSAS
 THIS 13 DAY OF DECEMBER, 1973.

B.A. Veltman
 B.A. VELTMAN
 COUNTY ENGINEER

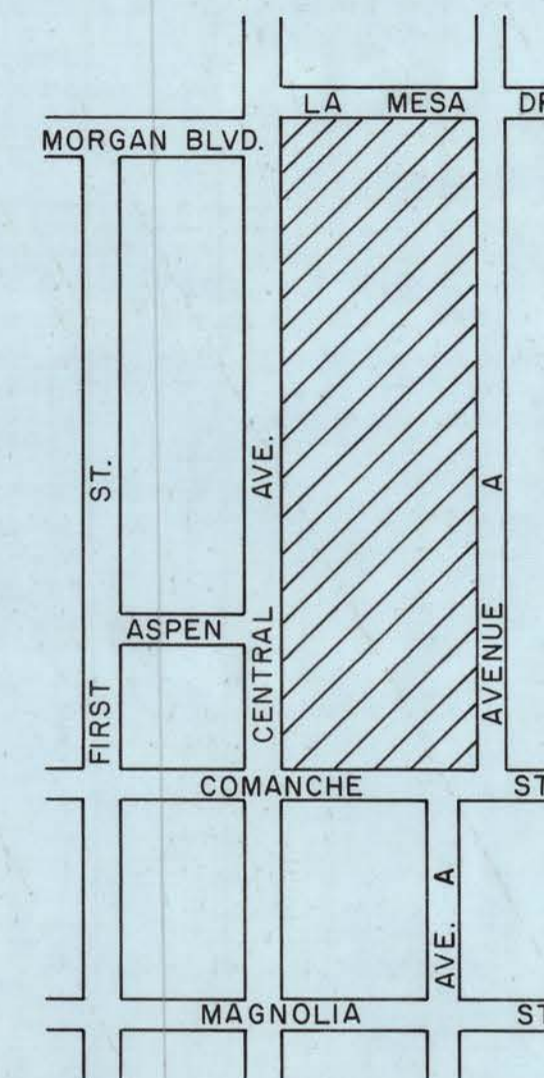
SURVEY AND PLAT BY
 BREZINA ENGINEERING
 DODGE CITY, KANSAS
 THIS 12 DAY OF December, 1973.

Grant A. Brezina
 GRANT A. BREZINA
 REGISTERED LAND SURVEYOR



CLOSURE COMPUTATION

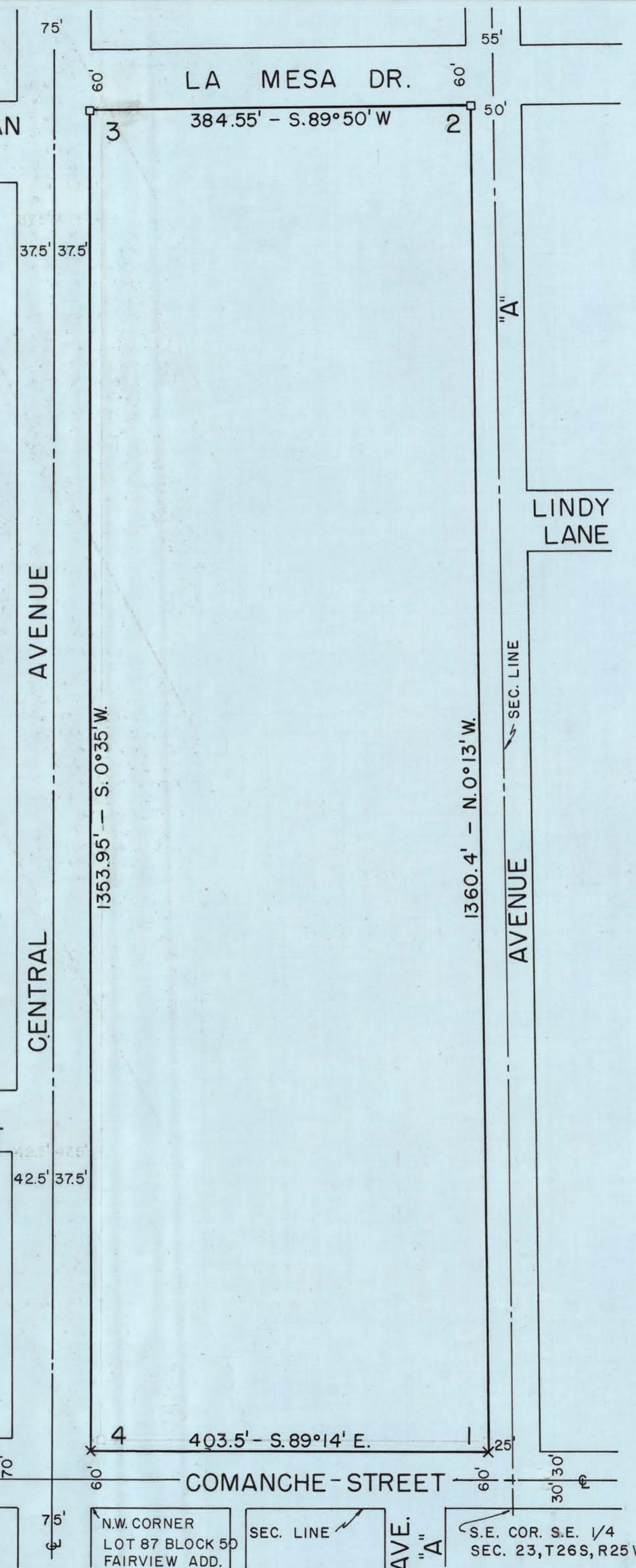
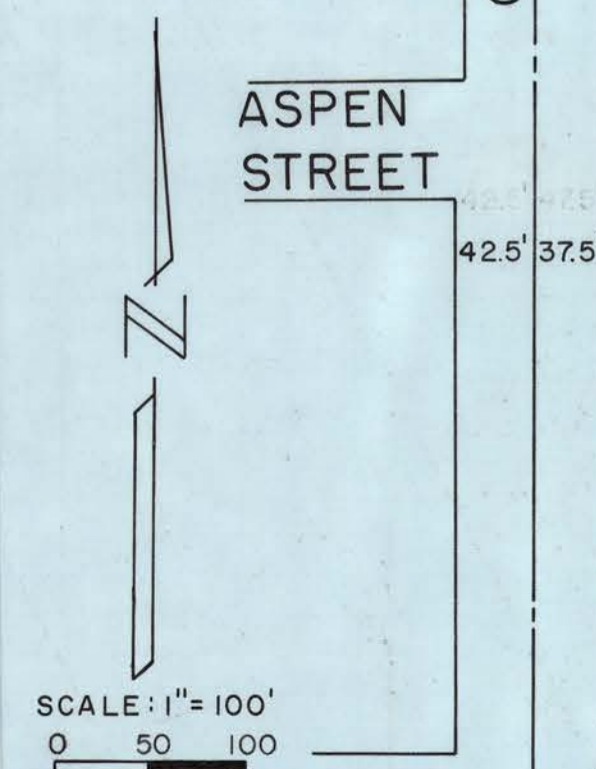
BEARING	DIST.	SIN	COS	+LAT. NORTH	-LAT. SOUTH	+DEP. EAST	-DEP. WEST
N. 0° 13' W.	1360.4'	.00378	.99999	1360.39			5.14
S. 89° 50' W.	384.55'	1	.00291		1.12		384.55
S. 0° 35' W.	1353.95'	.01018	.99995		1353.88		13.78
S. 89° 14' E	403.5'	.99991	.01338		5.40	403.46	
TOTAL				1360.39	1360.40	403.46	403.47



LOCATION MAP

□ = 4"X4" CONC. MONUMENT
 X = X SET IN CONCRETE

NOTES: SEE PLAN SET FOR EACH LOT CORNER



N.W. CORNER LOT 87 BLOCK 50 FAIRVIEW ADD.
 SEC. LINE
 AVE. "A"
 S.E. COR. S.E. 1/4 SEC. 23, T26S, R25 W.